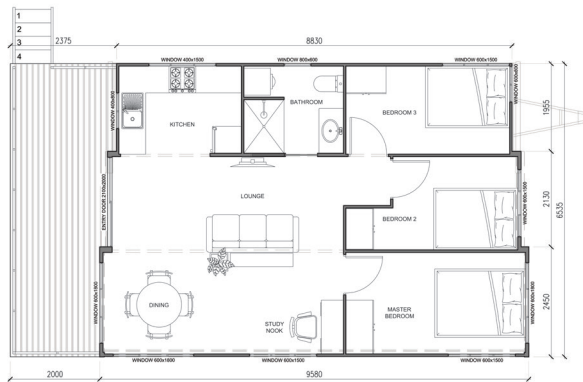


THE KIRRA

Three bedroom house

The Kirra is a 59m² towable home that expands to triple its size once setup. Featuring a large kitchen, living and dining area that opens up to a generous outdoor deck.



Notes: Images depicted may include optional upgrades

DIMENSIONS

Length of house	9.5m
Length including deck	11.6m
Width	6.5m
Expanded width	6.2m
Weight (approx)	5000kg
Height	3.35- 3.9m

STANDARD INCLUSIONS

- Double sliding doors with security screen and large windows fitted with fly screens
- 3.5 kW Mitsubishi air-conditioning split system reverse cycle unit with remote screens
- Electrical fixtures including lights, double GPs and smoke detectors
- Bathroom with vanity, shower and toilet suite
- Large double undercover deck with stairs
- Three bedrooms with built-in storage.
- Kitchen with gas stove, electric oven and rangehood
- Plumbing including instantaneous 20 litre gas hot water system

OPTIONAL UPGRADES

- **Light & Airy colour palette:**
Includes wallpaper feature wall, internal cladding, backsplash, custom cabinetry, brushed gold tapware.
- **Dark & Moody colour palette:**
Includes wallpaper feature wall, internal cladding, backsplash, custom cabinetry, brushed nickel tapware.
- **Off-grid solutions:**
Including gas appliances, solar panels, eco toilet and water management systems.
- **Internal & External upgrades:**
Can include custom paint, cladding, wallpaper, additional decking, upgraded appliances such as dishwasher, air conditioning units, fire places, freestanding bath and more.